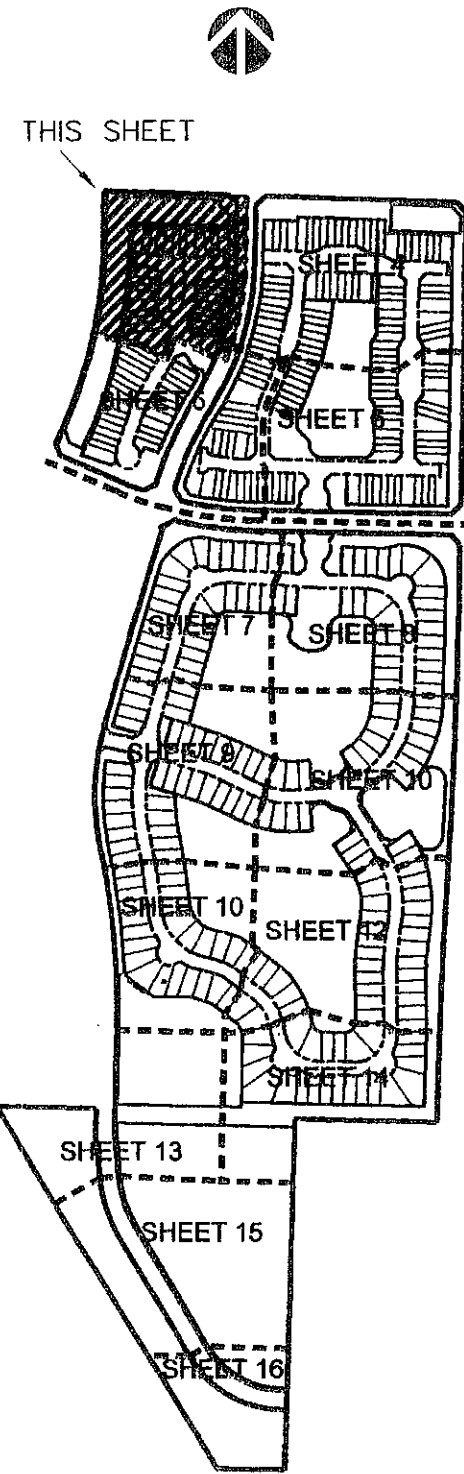
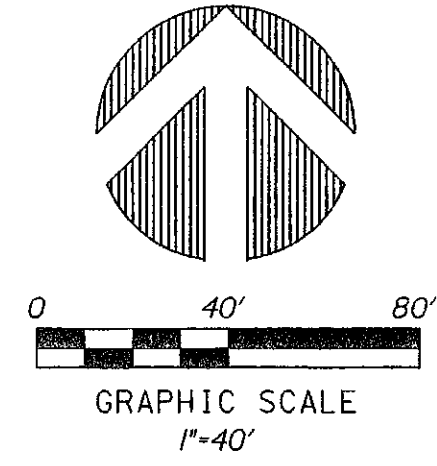
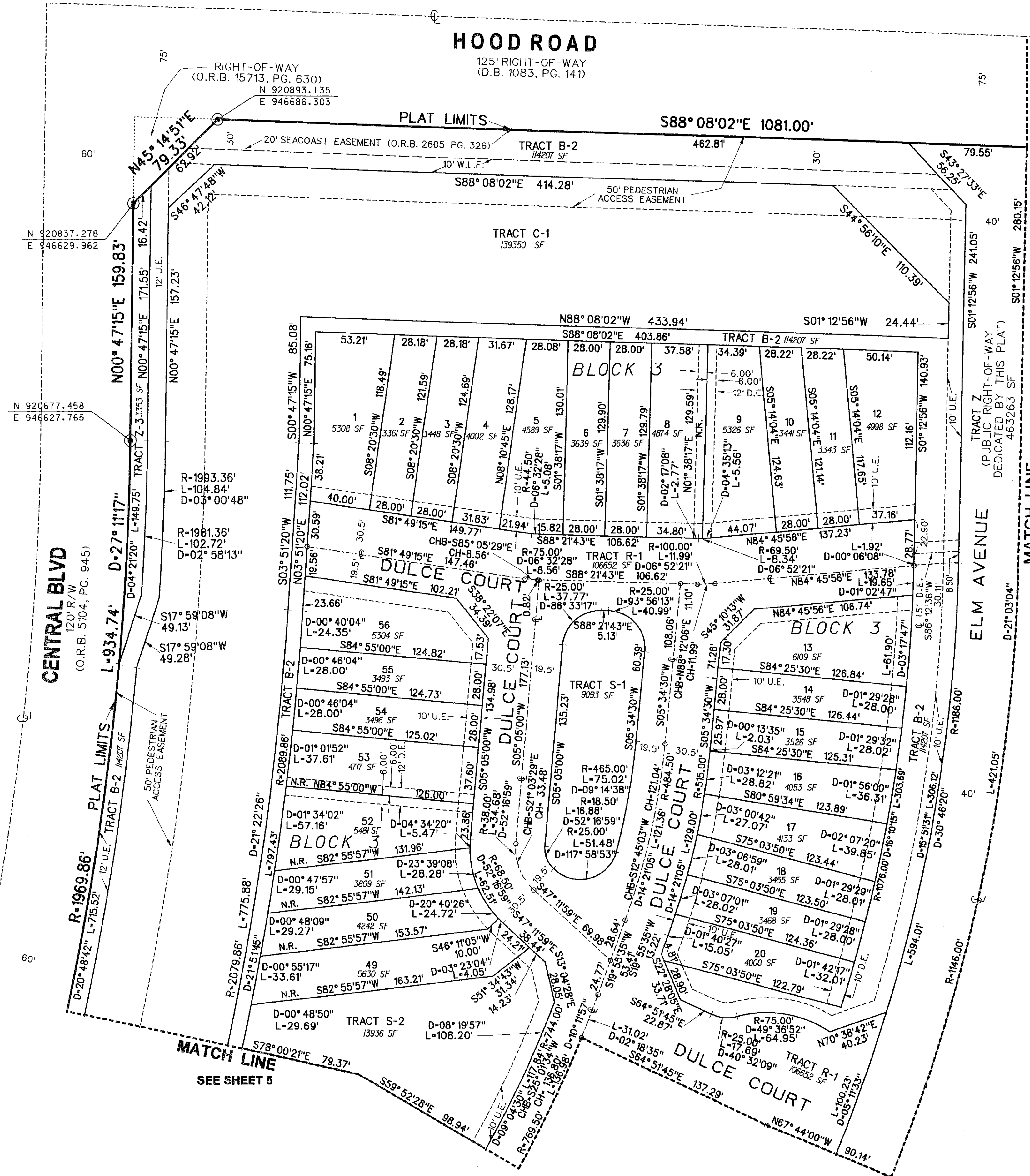


**PERIMETER**  
**SURVEYING & MAPPING**  
 Certificate of Authorization No. LB7264  
 Prepared by: Jeff S. Hodapp, P.S.M.  
 951 Broken Sound Parkway, Suite 320  
 Boca Raton, Florida 33487  
 Tel: (561) 241-9988  
 Fax: (561) 241-5182



**KEY MAP**  
(NOT TO SCALE)

**PALOMA, P.U.D.**  
 A PORTION OF THE WEST ONE-HALF OF SECTION 36, TOWNSHIP 41 SOUTH,  
 RANGE 42 EAST, AND A PORTION OF THE NORTHWEST ONE-QUARTER OF  
 SECTION 1, TOWNSHIP 42 SOUTH, RANGE 42 EAST, PALM BEACH GARDENS,  
 PALM BEACH COUNTY, FLORIDA.  
 JULY, 2006



- LEGEND:**
- SET P.R.M. (UNLESS OTHERWISE NOTED) 4" X 4" CONC. MON. WITH ALUMINUM DISK STAMPED P.R.M. #LB7264 SET P.C.P. #LB7264 CENTERLINE
- ABBREVIATIONS:**
- CHB CHORD BEARING
  - CONC. CONCRETE
  - COR. CORNER
  - D. DELTA (CENTRAL ANGLE)
  - D.E. DRAINAGE EASEMENT
  - ARC. ARC LENGTH
  - L.B. LICENSED BUSINESS
  - L.E. LANDSCAPE EASEMENT
  - L.S. LICENSED SURVEYOR
  - L.S.E. LICENSED SURVEYOR & MAPPER
  - MON. MONUMENT
  - O.R.B. OFFICIAL RECORDS BOOK
  - N.P.B.C.I.D. NORTHERN PALM BEACH COUNTY IMPROVEMENT DISTRICT
  - N.R. NON-RADIAL
  - P.A.E. PEDESTRIAN ACCESS EASEMENT
  - P.B. PLAT BOOK
  - P.B.C.R. PALM BEACH COUNTY RECORDS
  - P.G. PAGE
  - P.C.P. PERMANENT CONTROL POINT
  - P.O.B. POINT OF BEGINNING
  - P.O.C. POINT OF COMMENCEMENT
  - P.R.M. PERMANENT REFERENCE MONUMENT
  - P.S.M. PROFESSIONAL SURVEYOR & MAPPER
  - P.U.D. PLANNED UNIT DEVELOPMENT
  - R.A.D. RADIAL
  - R.E.E. ROOF ENCROACHMENT EASEMENT
  - R.W. RIGHT-OF-WAY
  - S.E. SIDEWALK EASEMENT
  - SEC. SECTION
  - S.F. SQUARE FEET
  - SLE. SEWER LINE EASEMENT
  - U.E. UTILITY EASEMENT
  - W.L.E. WATER LINE EASEMENT
  - W.M.E. WATER MANAGEMENT EASEMENT
  - WM. WATER MANAGEMENT
  - WM. MAINTENANCE EASEMENT
  - WMAE. WATER MANAGEMENT ACCESS EASEMENT